

KIP 800 | COLOUR SERIES



KIP 800 | COLOUR SERIES

A new generation of wide format functionality

The KIP 800 Colour Series provides a comprehensive solution for a range of wide format printing tasks that require the highest levels of quality and performance. The system's workflow provides powerful print control for any production environment from a range of print submission applications, cloud printing, scan & copy, variable data printing and fully integrated stacking and folding.



| KIP 860

| KIP 870

| KIP 880-890


Engineered to deliver **BREAKTHROUGH COLOUR PRINT QUALITY**


while providing real value from high quality images, reliable performance and efficient operation.

Print production on the KIP 800 Colour Series systems produces amazingly vibrant colours, striking graphics, and photographic images that capture subtle tints and hues with unsurpassed colour stability from the first to final print.

All prints and copies generated by the KIP 800 Colour Series systems are fully lightfast, meaning that they will not fade or exhibit colour deterioration from exposure to light over extended periods. The CMYK dry toner system employed by the KIP 800 Colour Series produces 100% waterproof images that are suitable for outdoor applications even in inclement weather.

Operational Speeds

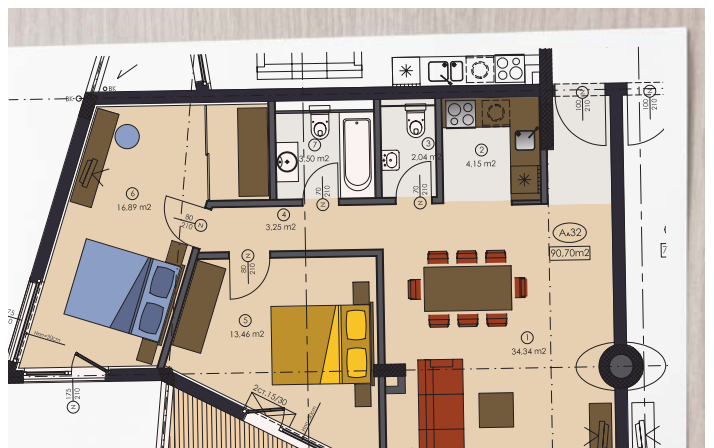
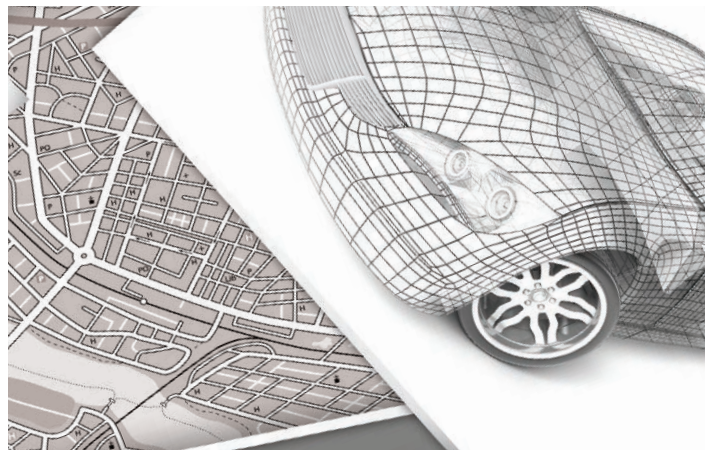
 268 m² per hour Vibrant Colour

 334 m² per hour Single Pass Black

TECHNICAL DOCUMENT & DISPLAY GRAPHIC CREATION

The KIP 800 Colour Series systems are designed for technical, graphic and office document users who require high demand output, precise imaging and bold, expressive colour fidelity.

The KIP 800 Colour Series systems are a comprehensive wide format solution for a range of printing tasks spanning from architectural, engineering, and construction documents — to maps, posters, signs, and photo enlargements — without sacrificing quality or performance.



INTRODUCING KIP 800 COLOUR SERIES

the new line of colour print systems

Explore the new KIP 800 Colour Series. Offering the same compact design and function as the KIP 70 Series, now with colour. The KIP 800 Colour Series saves serious time and money – making ultra high-quality wide format printing more cost effective than ever before. Printing is faster. Operation is simpler. Finishing is automatic. Reliability keeps you up and running. Image quality will keep your customers coming back for more.



KIP 860

Multi-function colour system

Experience exceptional workflow efficiency!

The KIP 860 is ideal for environments that require convenient multi-function productivity with a single footprint space-saving design. The KIP 860 colour print system provides extraordinary print quality and performance for both colour and black & white wide format printing of technical and business graphics. All system features and functions are at your fingertips using the intuitive touchscreen navigation that automates copy, scan and print functions for single touch productivity.

Features

- 2 Roll Multi-Function System with Integrated Scanner
- 12" Smart System K Touchscreen
- Standard Front Stacking
- Optional Rear Stacking or KIPFold
- KIP System K Print Management Suite
- Windows and AutoCAD Drivers
- Workflow Automation

KIP 800 | COLOUR SERIES



KIP 870

Multi-touch production colour print system

A new level of enterprise performance!

The KIP 870 workgroup and departmental print system is designed for high demand project requirements, with outstanding performance and reliability. High resolution colour and black & white mixed set production with built-in cost efficiency reporting. Expand the compact front stacking design with versatile rear stacking or folding accessories that increase productivity. Touchscreen convenience offers advanced network cloud access, set printing and system management without a PC workstation.

Features

- 4 Roll Network Printer
- 12" Smart System K Touchscreen
- Standard Front Stacking
- Optional Rear Stacking or KIPFold
- KIP System K Print Management Suite
- Windows and AutoCAD Drivers
- Workflow Automation

KIP 880 890

Multi-function production colour system

The ultimate in wide format functionality!

The KIP 880-890 delivers unmatched multi-function copy, scan and print performance for high demand enterprise workflow. Engineered to deliver vibrant consistent colour quality from first to final print. The integrated dual footprint configuration multitasks scan and print production, saving valuable project time. Smart touchscreen automation simplifies complex copy, scan and print processes for single touch control.

Features

- 4 Roll Multi-Function System with Integrated Scanner
- KIP 880 includes a KIP 720 CIS Scanner
- KIP 890 includes a KIP 2300 CCD Scanner
- 12" Smart System K Touchscreen
- Standard Front Stacking
- Optional Rear Stacking or KIPFold
- KIP System K Print Management Suite
- Windows and AutoCAD Drivers
- Workflow Automation

KIP 800 COLOUR SERIES

features designed for effortless operation

- Colour and Black & White Print Production
- Integrated Folding, Finishing & Stacking Systems
- Automatic Roll Trimming
- Quick Switch Technology
- Integrated USB Port for External Drives
- Production at Remarkable Print & Scan Speeds
- Media Load Assist
- Extended Print Lengths for Maximum Productivity
- Automatic Image Calibration for Precise Colour Output
- Technical Document and Display Graphic Creation
- Large Capacity Toner Cartridges for Continuous Print Runs and Productivity



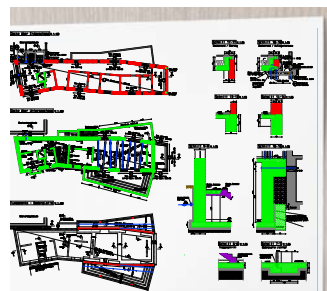
KIP ImagePro

KIP ImagePro is a single software solution designed to simplify every stage of colour and black & white wide format workflow.



Large Capacity Toner

Each CMYK cartridge contains 1,000g of toner for a total capacity of 4,000g - allowing longer uninterrupted colour and black & white print runs for continuous system productivity.



Superb Resolution

The KIP 800 Series is a comprehensive solution for a range of wide format printing tasks from technical documents to maps & posters.



Low Cost of Operation

The KIP 800 Series color and black & white LED production printing systems are based on a unique design that lowers the operational costs.



Quick Switch Technology

The KIP 800 Colour Series print technology eliminates roll switching delays for increased productivity. Two or 4 media rolls and a sheet feeder deliver mixed print sizes at full production speed.



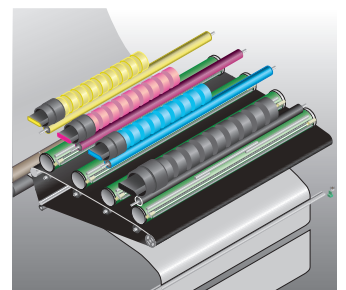
Extended Print Lengths

The KIP 800 Colour Series handles long print images on a variety of media types from either of its 2 or 4 integrated roll decks for maximum productivity and operator efficiency.



Media Load Assist

An ergonomic roll cap system simplifies the process of loading the 300 or 600 square metres media capacity.

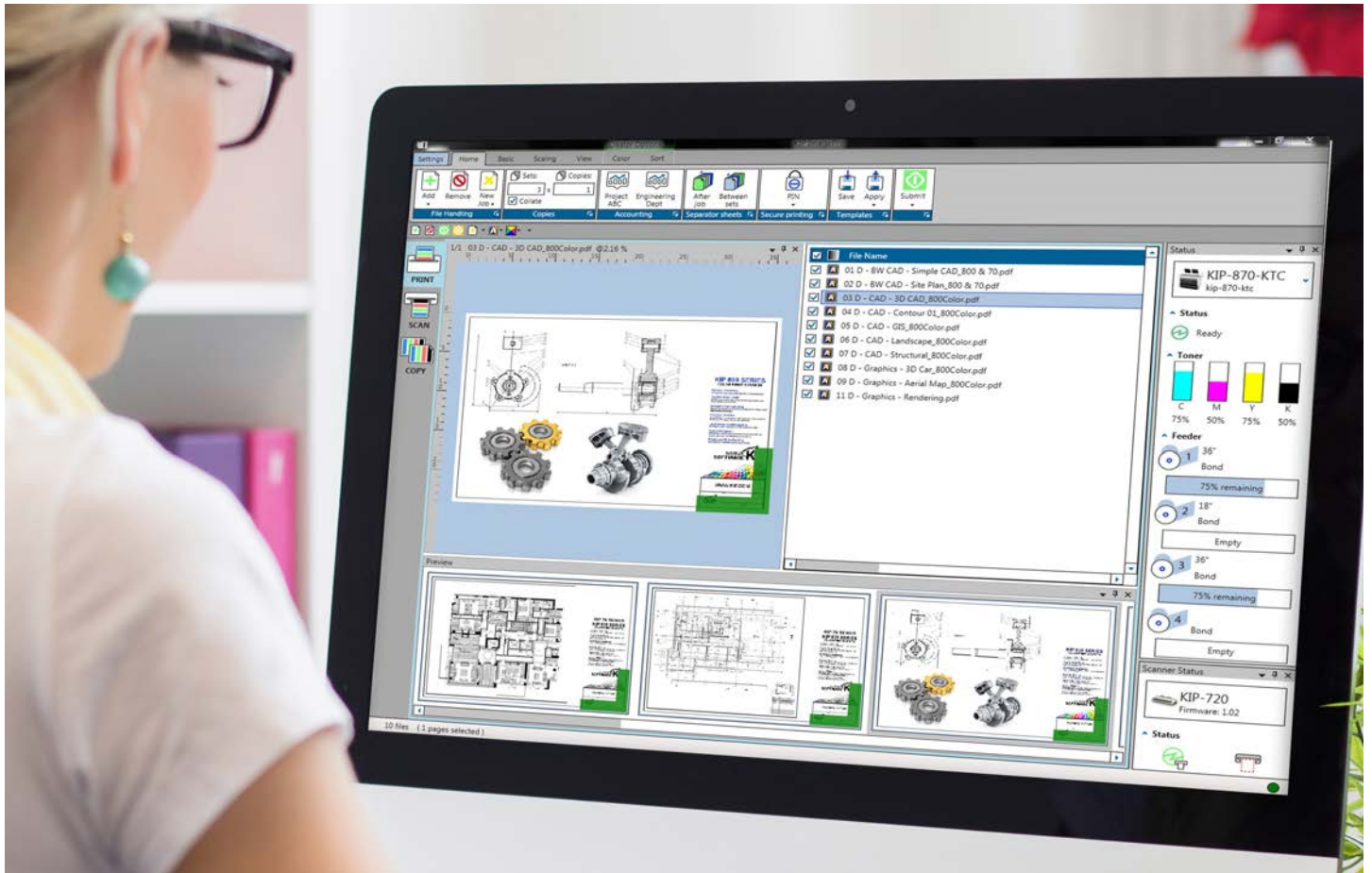


Single Pass Black

KIP 800 Series single pass black delivers a 25% increase in productivity. An exclusive single belt drive system performs automatic calibrations for precise imaging and bold, expressive colour output.



One Application for
all Wide Format Imaging



KIP ImagePro is a single software solution designed to simplify every stage of colour and black & white wide format workflow.

STANDARD MODE

- Fast and Easy Print Control
- Quick Access Tool Bar
- Column Logic
- High Definition Viewer
- Image Clean Up
- Area of Interest

EXPANDED MODE

Features for Technical Production and Colour Graphic Professionals:

- Colour Management
- Nest, 2 Up, Paneling
- Job Validation
- Customisable Interface Pop Out
- Flexibility in System Configurations

KIP 70 Series



KIP 70 and KIP Color Series Multi-touch Solutions

- Copy & Scan to Local/USB/LAN/Cloud (MFP)
- Print from Local/USB/LAN/Cloud
- Super View with Area of Interest
- Cloud Connect
- Data Security
- Smart Scan
- KIPFold Control

OPTIONS:

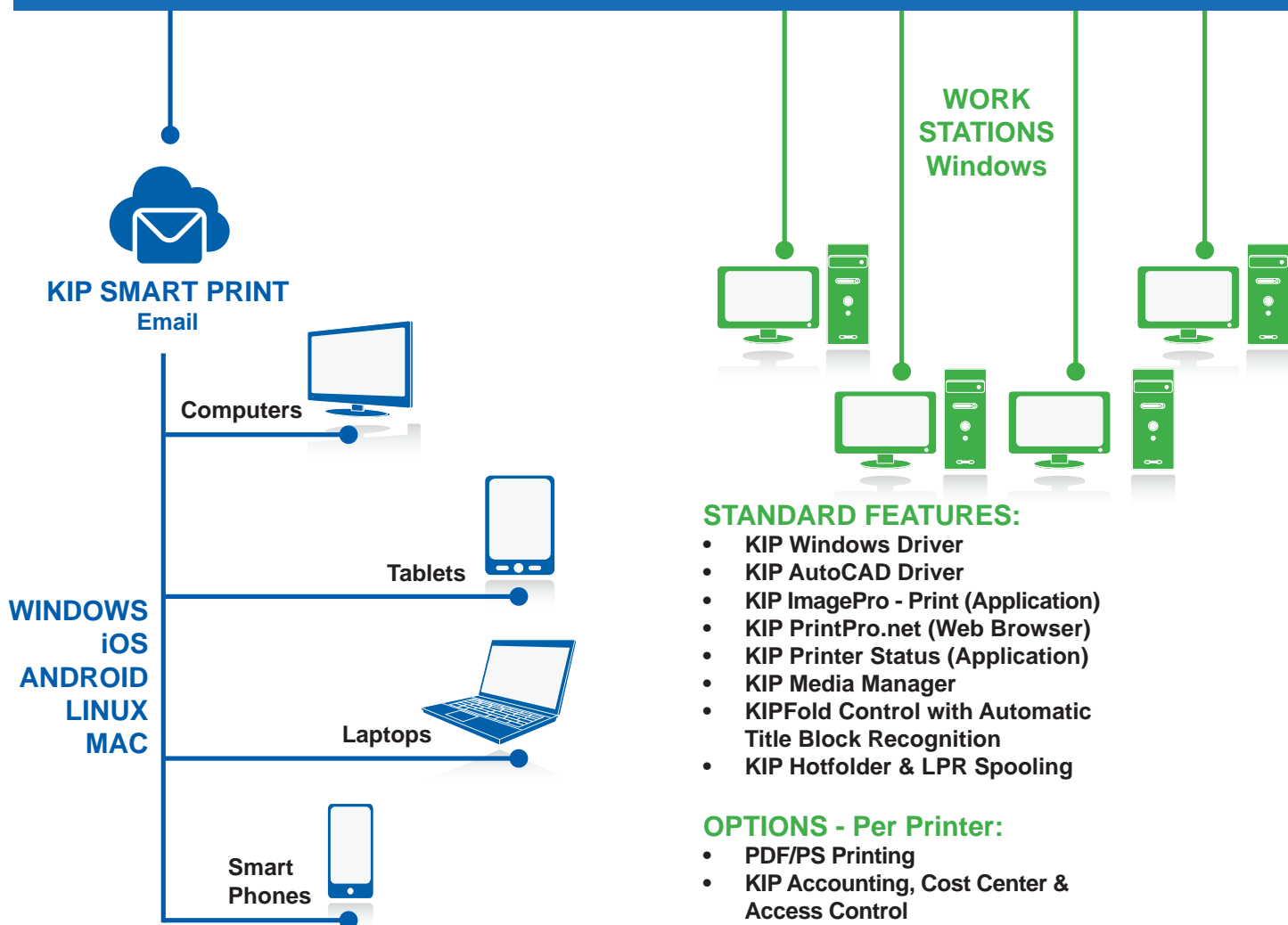
- Removable HD
- Card Reader



MFP

Printer

NETWORK



KIP Color Series



MFP
Printer



MFP
Printer

KIP Scan Systems

Scan, Copy & Print

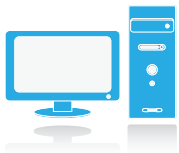


KIP ImagePro - Scan & Copy:

- Scan - Local/USB/LAN/Cloud
- Copy - To KIP Color or B&W printer
- Print - To KIP Color or B&W printer
- Color Adjustment / Management
- High Definition Viewer
- Area of Interest
- KIPFold Control

WORK STATIONS

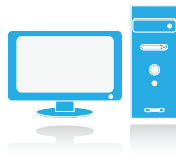
MAC



STANDARD FEATURES:

- KIP PrintPro.Net (Web Browser)
- PostScript Printer Description File
- KIP Hotfolder Support
- LPR Spooling

LINUX



STANDARD FEATURES:

- KIP PrintPro.Net (Web Browser)
- KIP Hotfolder Support
- LPR Spooling

KIP DIGITAL DATA SECURITY



STANDARD FEATURES:

- Image Overwrite
- Removable Hard Disk Drive Accessory Kit
- Standard Security Updates
- KIP Secure Print
- KIP Accounting Center Integration

Comprehensive KIP System K features are available in the following brochures:

- KIP Multi-touch Solutions
- KIP PC & Web Print Solutions
- KIP Admin, Accounting & Access Control

KIP 800 Colour Series Specifications

4 Roll Colour and Black & White Printer	Colour and black & white printer with intelligent KIP System K touchscreen
2/4 Roll Colour and Black & White Print/Copy/STF	Colour and black & white printer with intelligent KIP System K touchscreen for Print/Copy and STF functions
System Scanners	KIP 860: KIP 720 embedded / KIP 880: KIP 720 CIS Scanner / KIP 890: KIP 2300 CCD Scanner
Scanner Stand	KIP 720 / KIP 2300 Scanner Stand (for the KIP 880-890 or optional for stand-alone scan applications)
Stacking Systems (standard)	Front Stacking Print Tray
Finishing Systems (optional)	KIP 800 Stacker, KIPFold 1800, KIPFold 2800
Description	Departmental production colour and black & white wide format print/copy/scan
Type	LED Array Electro photography with organic photoconductor (OPC drum) Contact Development using non magnetic mono-component toner
Configurations	Printer or multi-function system (print/copy/scan)
Speed	Up to 334 m ² in single pass black or 268 m ² per hour in color regardless of image type or print resolution
Warm Up Time	Instant from standby, less than 6 minutes from power on
Toner	Four colour (CMYK), dry toner, print images are UV resistant and waterproof
Input Power	EU/UK: 220-240 V, 50/60 Hz, 16 A
Power Consumption	Ready: 0.6 kWh. Printing: 1.9 kWh, Warm Up: 3.4 kWh, Sleep Mode: 3 Wh
Acoustic Noise	< 65 db Printing
Ozone	< 0.05 ppm (average of 8 hours)
Dimensions	KIP 860 1500 x 1080 x 1155 mm (W x D x H) KIP 870 1500 x 1080 x 1220 mm (W x D x H) KIP 880-890 1970 x 1080 x 1220 mm (W x D x H)
Weight	KIP 860 510 kg KIP 870 530 kg KIP 880 556 kg Weight of the KIP 880-890 is dependent on the scanner model – KIP 720 noted

Printer

Print Resolution	600 x 2,400 dpi
Paper Capacity	300 sq m (2 rolls + cut sheet) 600 sq m (4 rolls + cut sheet)
Output Sizes Width (roll media)	297 mm - 914 mm
Output Sizes Length (roll media)	210 mm minimum, 64 m maximum (actual length may be dependent on media type and file type limitations)
Paper Weight (roll media)	Bond: 67 – 150 gsm, Film: 3 – 4 mil Double Matte Polyester, Tracing: 67 – 75 gsm Banner and Gloss: see KIP 800 Media Guide
Sheet Bypass	Up to 150 gsm bond / Maximum sheet size 914 mm x manageable length / Minimum sheet size A3
Media Types	Bond Paper: Economical Bond, Standard Bond. Specialty Bond paper: Presentation Bond, Heavy Weight Bond. Polyester Film: 3 mil Clear, 3 mil Double Matte, 4 mil White Opaque. Banner Media: Fusion Soft Polyester. Please see the KIP 800 Series Media Guide for details.

Scanner / Copier

Resolution	600 dpi (optical)
Original	Single Sheet, image viewable/face up
Widths	210 mm - 914 mm (international standard page sizes to include ANSI, ARCH, ISO A & B, CHN, JPN)
Length	210 mm – 6 m
Please see the KIP 2300 Scanner documentation for details on this optional scanner for the KIP 890 Colour System	

Controller

Controller Type	System K Embedded, Microsoft® IoT Enterprise
Memory	4 GB (min)
Solid State Drive	Minimum 256 GB (Upgradable)
Compatible File Formats	Raster Colour: TIFF, JPG, JPG2000, PNG, BMP, GIF, TGA, RLE/RLC Vector Colour/B&W: HPGL, HPGL/2, HP-RTL, Postscript (PS/EPS), Adobe PDF, Autodesk DWF, Multipage PDF & DWF Raster B&W: TIFF Group 3 & 4, CALS Group 4, Grayscale TIFF Vector B&W: Calcomp 906/907

Space, Electrical & Environmental Requirements

Total Space (minimum)	3350 x 2600 mm (W x D) (KIP 860 & 870) 4500 x 2600 mm (W x D) (KIP 880 with KIP 720) 3350 x 5190 mm (W x D) (KIP 860 & 870 with optional rear print stacker) 4500 x 5190 mm (W x D) (KIP 880 with KIP 720 with optional rear print stacker) The flexibility of the KIP 880-890 system permits the scanner to be placed perpendicular or parallel to the KIP printer for individual workflows, which can result in special requirements that may differ than noted above. System access through standard door frames without lifting or tilting.
Electrical Requirements	KIP 860 & 870 EU/UK: 220-240 V, 50/60 Hz, 16 A KIP 880-890 EU/UK: 220-240 V, 50/60 Hz, 16 A for KIP Printer and 100–240 V, 50/60 Hz, 6 A or higher for KIP Scanner
Electrical Receptacle	Europe = CEE 7 (x2 for KIP 880-890) UK = BS 546 (x2 for KIP 880-890) All other regions = please refer to your local standards
Network Port	RJ-45 port-CAT5 or higher. LAN rated at least at 100 mb. Recommended is 1000 mb
Room Temperature	10-30°C
Humidity	15-80% RH
Site Survey	KIP 800 Colour Series site survey documentation is to be completed prior to system installation

KIP 800 Colour Series Accessories

Stacker

The KIP 800 Colour Series integrated stacking systems improve the efficiency and productivity of your print production environment by providing a convenient place to neatly stack a multitude of various page sizes. Unattended print runs can be scheduled with peace of mind due to comprehensive internal diagnostics of the KIP 800 Colour Series.

Optional for KIP 860, 870, 880-890



KIPFold 2800

The KIPFold 2800 system automates wide format document folding requirements by providing folding, stacking and collation in a compact design. KIP online folders intelligently communicate with KIP printers and are fully integrated with KIP software applications and print drivers to provide seamless workflow integration.

Optional for KIP 860, 870, 880-890



Copying & Scanning

The KIP 800 Colour Series provides efficient, high speed hard copy reproduction workflow. Exceptional image quality is achieved through true 600 x 600 dpi optical resolution via a choice of integrated KIP Scanners, with advanced optics and delicate original transport processes for pixel-perfect images.

Integrated scanner included with KIP 860

KIP 720 scanner available with KIP 880

KIP 2300 scanner available with KIP 890



THE COLOUR OF KIP IS GREEN.

KIP is committed to product designs that promote environmental health and sustainability. KIP's goal is to consistently improve and refine the technologies in products that keep our planet green. KIP considers the total product life cycle - from the manufacturing process to final device disposal in our shared ecosystems.



LOW EMISSIONS – HIGH EFFICIENCY

- KIP products all have a variety of sleep modes and power usage timers to reduce power consumption. All KIP systems are Energy Star qualified.
- During operation, the power consumption of KIP products are one of the lowest in the industry thanks to efficiency in design.
- KIP's manufacturing processes have reduced electricity consumption by 33%, all while increasing productivity.



KIP.COM/GREEN | FOR MORE INFORMATION

Smartdata Oy
puh. 040 411 4703
info@smartdata.fi
www.smartdata.fi



WWW.KIP.COM