



**Wide Format Folding System  
Designed for**

KIP 800 COLOUR SERIES

KIP 70 B&W SERIES

# KIPFold 1800





# KIPFOLD 1800

*Wide Format Document Folding System*



## INTUITIVE DESIGN

- Automatic Title Block Detection
- Automatic Fold by Page Size
- Customised Fold Presets
- Advanced Technical Interface
- Full Bi-Directional Communication
- Superior Job Recovery Functionality
- KIP System K Software Integration
- Metric and Imperial Standard Size Folds



**Portrait Packet Styles**

## FOLD QUALITY & RELIABILITY

KIPFold 1800 with KIP System K Software integration provides seamless workflow to the KIP 800 Colour Series and KIP 70 Series Monochrome print systems.

KIPFold 1800 is built to exacting standards, featuring a solid steel frame and stainless steel feed guide with low static transfer system for consistent and reliable operation. High quality components, sensors, precision bearings and solid design ensure precision and accurate folding.

The KIPFold 1800 uses proven folding technology based on a precision roller design for high production print environments. KIPFold 1800 offers industry leading fold quality, exact fold delivery, precise packets, and crisp fan folded documents.

# VERSATILE PRODUCTION

Prints are folded allowing for easy document filing and distribution. A reliable and durable fold roller system ensures maximum packet accuracy. Users may conveniently select fold style preferences or no folding at their workstation before printing.

The KIP 1800 folding system features the flexibility to fold documents with precision. Prints are accepted in portrait format, to a portrait packet.

## KIPFold 1800 Features:

- Portrait Packet Styles
- Offline Manual Folding (Optional)



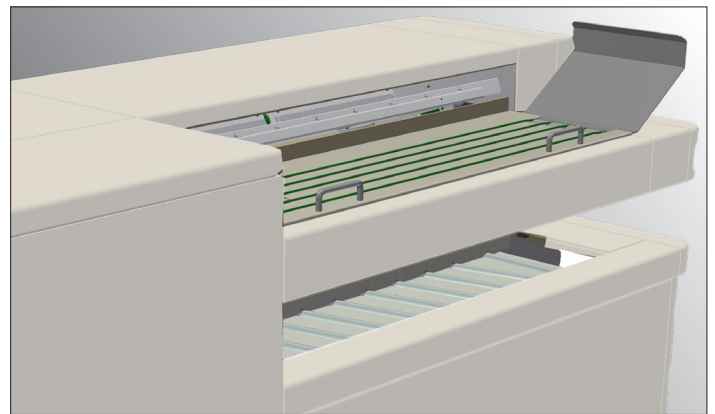
# SYSTEM INTEGRATION

This unique integrated solution allows complete control of the folder and folding packets directly from all KIP Applications including the KIP Touchscreen, KIP ImagePro, KIP PrintPro.NET, KIP Windows and AutoCAD HDI drivers.

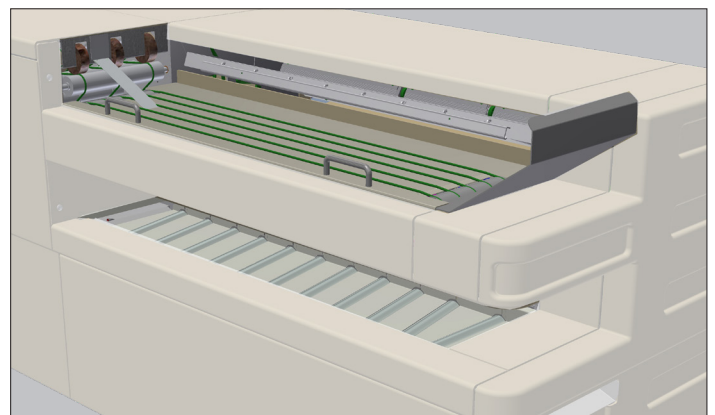
KIP System K Software allows all user levels to easily create and prepare prints for folding through the uniform software interface and application process.

## KIPFold 1800 System K Software Features:

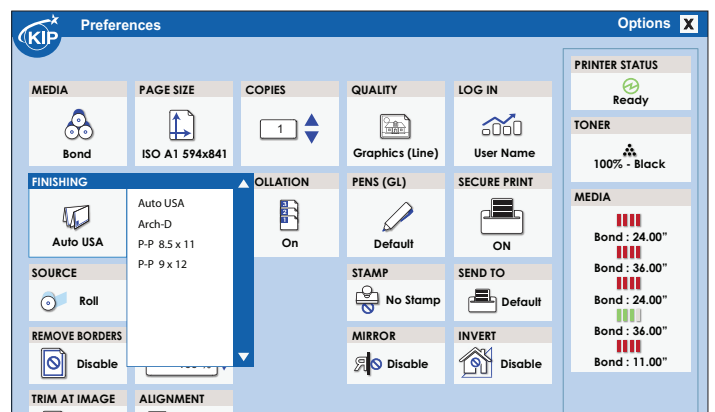
- Simplify custom folds with preset editor
- Print submission via PC and print drivers
- System error reporting through email notification
- Intelligent job recovery for accurate print accounting



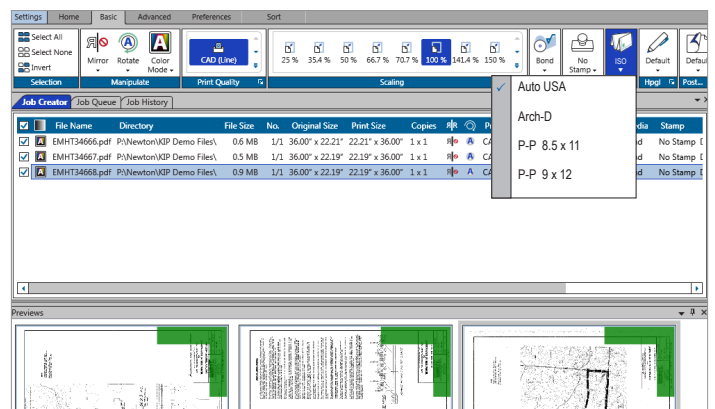
**Standard Folding**



**Production Crossfold with Stacking**



**Windows Driver Fold Packet Selection**



**PC, Browser, and Driver Folder Control**



# KIPFOLD 1800

Wide Format Document Folding System

## FOLD PACKET STYLES

The KIPFold 1800 utilises portrait feed to portrait style packets.

### PACKET TYPES

Portrait Feeding | Portrait Packet

DIN B 210x297

DIN B 210x305

DIN B 210x310

DIN C 210x297

DIN A 170/40x297

DIN A 190/20x297

DIN 180/30x297

DIN 185/25x297

Fan Fold 210

Ericson 190/20x297



## COMPATIBLE KIP MODELS

The KIPFold 1800 system is compatible for full integration with the following KIP production systems:



### 800 Series

KIP 860 | 870 | 880 | 890



### 70 Series

KIP 71 Series | 75 Series | 79 Series

[WWW.KIP.COM](http://WWW.KIP.COM)

KIP is a registered trademark of the KIP Group. All other product names mentioned herein are trademarks of their respective companies. All product features and specifications are subject to change without notice. Complete product specifications are available at [www.kip.com](http://www.kip.com). © 2020

V03/09/20\_EU