



**Wide Format Folding System
Designed for**

KIP 800 COLOUR SERIES

KIP 900 COLOUR SERIES

KIP 70 B&W SERIES

KIPFold 2800





KIPFOLD 2800

Wide Format Document Folding System

SPEED, POWER & PRODUCTIVITY

Engineered for production folding with seamless integration to the KIP 800 and KIP 70 Series print systems. The KIPFold 2800 automates large format document finishing by providing folding and stacking in an efficient and compact design.



INTUITIVE DESIGN

- Automatic Title Block Detection
- Automatic Fold by Page Size
- Customised Fold Presets
- Advanced Technical Interface
- Full Bi-Directional Communication
- Superior Job Recovery Functionality
- KIP System K Software Integration
- Metric and Imperial Standard Size Folds

FOLD QUALITY & RELIABILITY

KIPFold 2800 with KIP System K Software integration provides seamless workflow to the KIP 800 Colour and KIP 70 Series Monochrome print systems.

KIPFold 2800 is built to exacting standards, featuring a solid steel frame and stainless steel feed guide with low static transfer system for consistent and reliable operation. High quality components, sensors, precision bearings and solid design ensure precision and accurate folding.

The KIPFold 2800 uses proven folding technology based on a high precision blade and roller design for high production print environments. KIPFold 2800 offers industry leading fold quality, exact fold delivery, precise packets, and crisp fan folded documents to the millimeter.



Portrait & Landscape Packet Styles

VERSATILE PRODUCTION

Prints are folded and stacked at maximum speed, allowing for easy document filing and distribution. A reliable and durable fold roller system ensures maximum packet accuracy. Flat output stacking is included as a standard feature. Users may conveniently select fold style preferences at their workstation before printing.

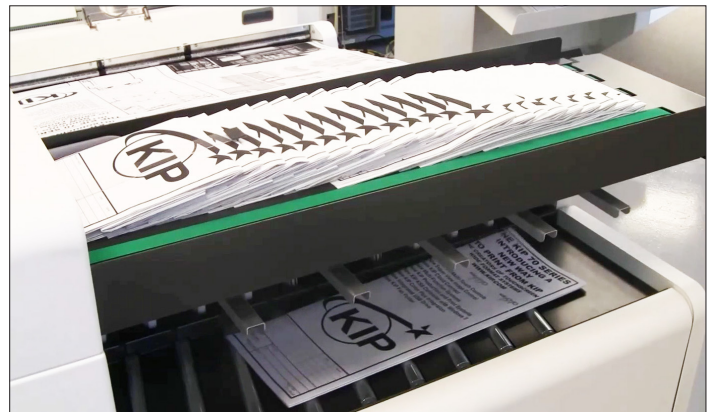
The KIP 2800 folding system features the flexibility to fold documents with precision, regardless of print orientation. Prints are accepted in either landscape or portrait format, allowing for fast and efficient folding operation.

KIPFold 2800 Features:

- Portrait & Landscape Packet Styles
- Integrated Flat Stacking – Up to 100 Sheets
- Offline Manual Folding
- Unlimited Length Fan Fold (*Optional*)
- Integrated 111 & 134 Tab Applicator (*Optional*)
- A2 Rotation Table (*Optional*)



Standard Folding



Production Crossfold with Stacking

SYSTEM K SOFTWARE

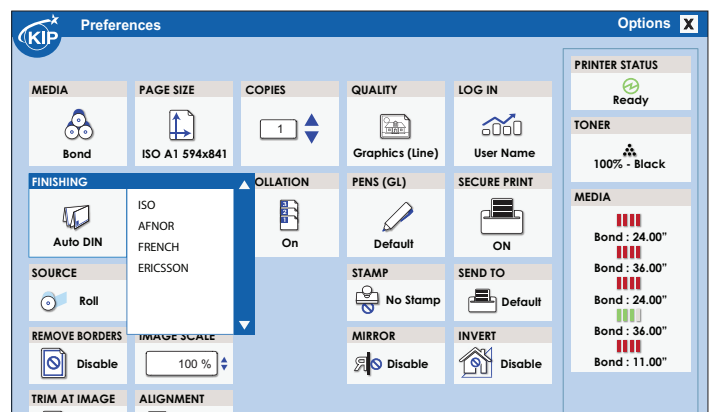
SYSTEM INTEGRATION

This unique integrated solution allows complete control of the folder and folding packets directly from all KIP Applications including the KIP Touchscreen, KIP PrintPro, KIP PrintPro.NET, KIP Windows and AutoCAD drivers.

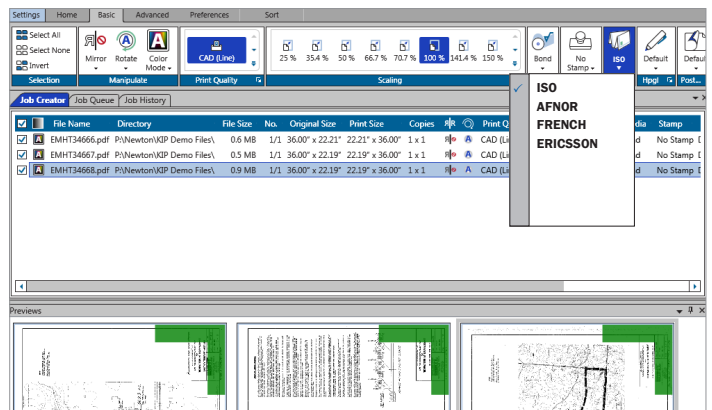
KIP System K Software allows all user levels to easily create and prepare prints for folding through the uniform software interface and application process.

KIPFold 2800 System K Software Features:

- Simplify custom folds with preset editor
- Print submission via PC and print drivers
- System error reporting through email notification
- Intelligent job recovery for accurate print accounting



Windows Driver Fold Packet Selection



PC, Browser, and Driver Folder Control



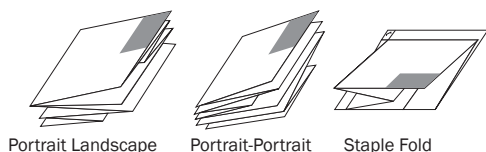
KIPFOLD 2800

Wide Format Document Folding System

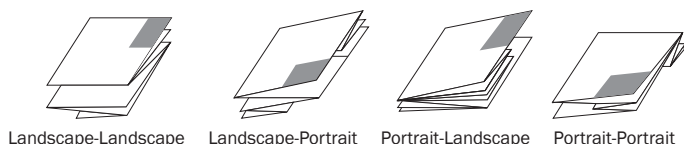
FOLD PACKET STYLES

The KIPFold 2800 does not compromise on folding styles, giving users the ability to switch quickly between folds without complex adjustments.

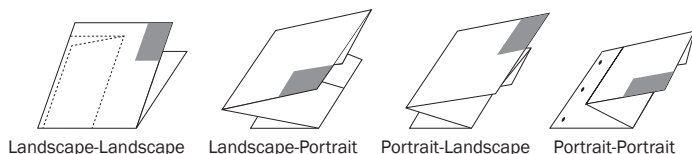
A0 Size Folds



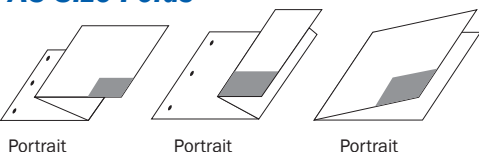
A1 Size Folds



A2 Size Folds



A3 Size Folds



FOLD STANDARDS

All folding standards come preset in System K Software, including:

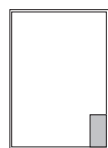
AFNOR

For folding ISO-standard sheet sizes (A0 to A3) to A4 size packets (210 mm x 297 mm). The AFNOR style folds accommodate drawings with the Title Block in the upper right corner – commonly used in France.

DIN 824

A German national standard, but widely used throughout the world for ISO-sized wide format documents.

AFNOR



A0 - 841 x 1189 mm



A1 - 841 x 594 mm



A2 - 420 x 594 mm



A3 - 420 x 297 mm

ISO



A0 - 1189 x 841 mm



A1 - 841 x 594 mm



A2 - 594 x 420 mm



A3 - 420 x 297 mm

COMPATIBLE KIP MODELS

The KIPFold 2800 system is compatible for full integration with the following KIP production systems:



Colour Series

KIP 860 | 870 | 880 | 890
KIP 970 | 980 | 990



70 Series

KIP 7170 | 7570 | 7970

WWW.KIP.COM